



# CAMELIA

— AT —

ARABIAN RANCHES II

FLOOR PLANS

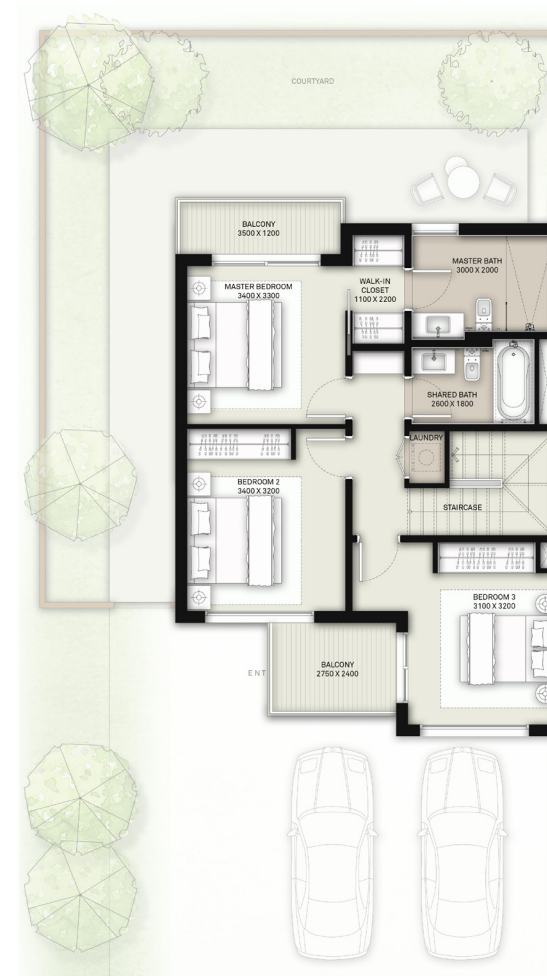
EMAAR

## CAMELIA - TYPE 1E

4 BEDROOMS  
TOTAL AREA: 2,143 SQ.FT.



GROUND FLOOR



FIRST FLOOR

## ARABIAN RANCHES II

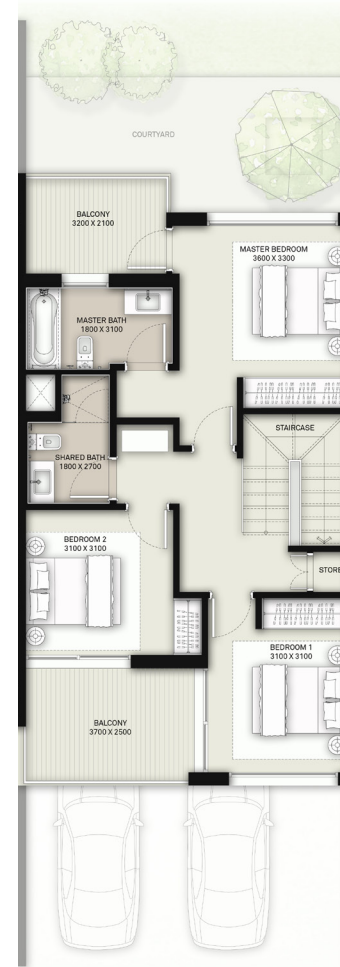
FLOOR PLAN 1. All dimensions are in imperial and metric, and measured from finish to finish excluding construction tolerances. 2. All materials, dimensions, and drawings are approximate only. 3. Information is subject to change without notice, at developer's absolute discretion. 4. Actual area may vary from the stated area. 5. Drawings not to scale. 6. All images used are for illustrative purposes only and do not represent the actual size, features, specifications, fittings, and furnishings. 7. The developer reserves the right to make revisions / alterations, at it's absolute discretion, without any liability whatsoever. \*Please note that landscaping & swimming pool are not provided by the developer.

## CAMELIA - TYPE 1M

3 BEDROOMS  
TOTAL AREA: 1,988 SQ.FT.



GROUND FLOOR



FIRST FLOOR

## ARABIAN RANCHES II

FLOOR PLAN 1. All dimensions are in imperial and metric, and measured from finish to finish excluding construction tolerances. 2. All materials, dimensions, and drawings are approximate only. 3. Information is subject to change without notice, at developer's absolute discretion. 4. Actual area may vary from the stated area. 5. Drawings not to scale. 6. All images used are for illustrative purposes only and do not represent the actual size, features, specifications, fittings, and furnishings. 7. The developer reserves the right to make revisions / alterations, at it's absolute discretion, without any liability whatsoever. \*Please note that landscaping & swimming pool are not provided by the developer.

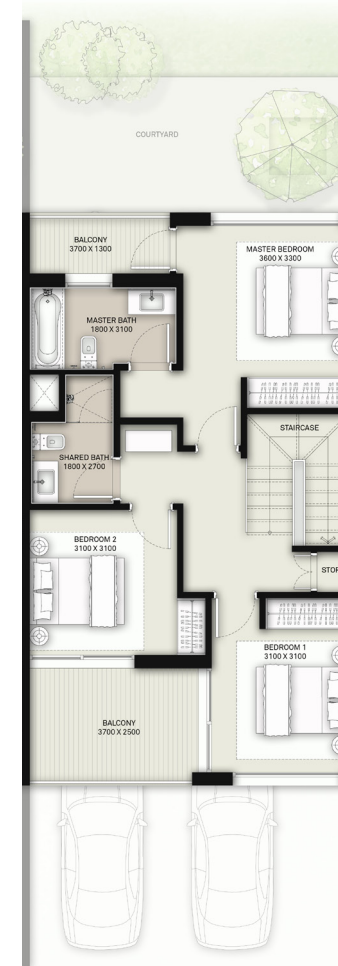


## CAMELIA - TYPE 2M

3 BEDROOMS  
TOTAL AREA: 1,969 SQ.FT.



GROUND FLOOR



FIRST FLOOR

## ARABIAN RANCHES II

FLOOR PLAN 1. All dimensions are in imperial and metric, and measured from finish to finish excluding construction tolerances. 2. All materials, dimensions, and drawings are approximate only. 3. Information is subject to change without notice, at developer's absolute discretion. 4. Actual area may vary from the stated area. 5. Drawings not to scale. 6. All images used are for illustrative purposes only and do not represent the actual size, features, specifications, fittings, and furnishings. 7. The developer reserves the right to make revisions / alterations, at it's absolute discretion, without any liability whatsoever. \*Please note that landscaping & swimming pool are not provided by the developer.